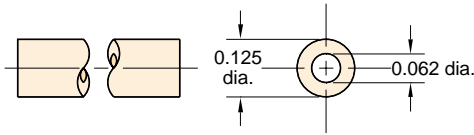


URH1-0402-□-□



1/16" I.D. Polyurethane Hose
(Former Part No. 3814-7)



Working Range: 0 to 105 psig at 100°F Maximum 120°F

Static Burst Pressure: Over 500 psig at 70°F

Color: Solid: Black, brown, white, gray, orange
Translucent: Clear, blue, green, red, yellow

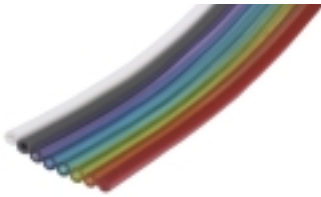
Lengths Available: 50 and 500 feet

Note: In normal application hose clamps are not required with hose when used with Clippard hose barb fittings

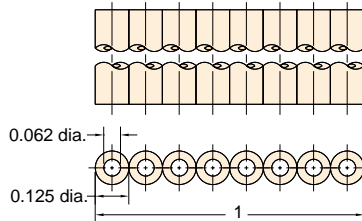
Note:

Specify color on order, and use full product number (including code letters for color) as shown in Price List. If no color is specified, clear will be furnished.

URH8-0402-02T-050



1/16" I.D. Polyurethane Ribbon Hose
(Former Part No. 3814-9)



Type: Flexible, durable urethane hose

Working Range: 0 to 105 psig at 100°F maximum 120°F

Static Burst Pressure: Over 500 psig at 70°F

Color: Solid: Gray, white
Translucent: Blue, green, orange, purple, red, yellow

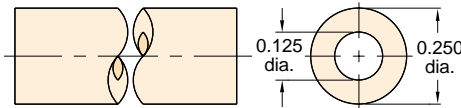
Lengths Available: 50 feet

Note: In normal application, hose clamps are not required with hose when used with Clippard hose barb fittings

URH1-0804-□-□



1/8" I.D. Polyurethane Hose
(Former Part No. 3814-6)



Working Range: 0 to 105 psig at 100°F Maximum 120°F

Static Burst Pressure: Approximately 425 psig at 70°F

Color: Solid: Black, brown, white, gray, orange
Translucent: Clear, blue, green, red, yellow

Lengths Available: 50 and 500 feet

Bend Radius: 2x hose dia.

Note: In normal application hose clamps are not required with hose when used with Clippard hose barb fittings

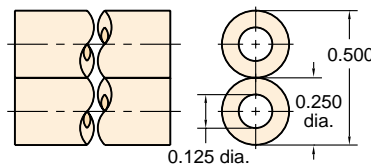
Note:

Specify color on order, and use full product number (including code letters for color) as shown in Price List. If no color is specified, clear will be furnished.

URH2-0804-01S-□



Twin 1/8" I.D. Polyurethane Hose
(Former Part No. 3814-13)



Working Range: 0 to 105 psig at 100°F

Static Burst Pressure: Approximately 425 psig at 70°F

Color: Solid: Gray and black combination

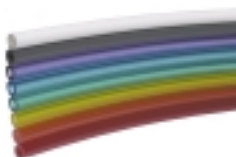
Lengths Available: 50 and 500 feet

Bend Radius: 2x hose dia.

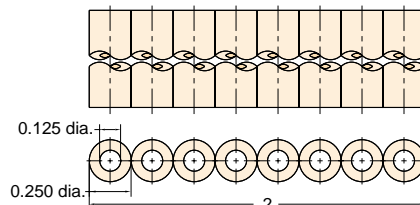
Use: Ideal for feeding supply in on one line and out on the other; reduces labor; makes neat assembly; may be parted with any sharp cutting edge

Note: In normal application, hose clamps are not required with 3814-13 hose when used with Clippard hose barb fittings

URH8-0804-02T-050



1/8" I.D. Polyurethane Ribbon Hose
(Former Part No. 3814-12)



Type: Flexible, durable urethane hose

Working Range: 0 to 105 psig at 100°F maximum 120°F

Static Burst Pressure: Over 500 psig at 70°F

Color: Solid: Gray, white
Translucent: Blue, green, orange, purple, red, yellow

Lengths Available: 50 feet

Note: In normal application, hose clamps are not required with hose when used with Clippard hose barb fittings